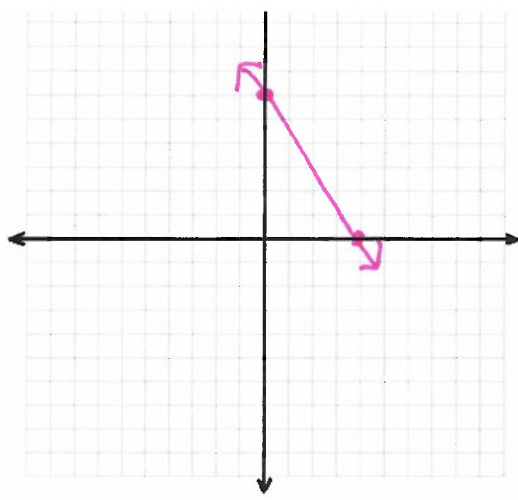


# Solving Equations Scavenger Hunt Recording Sheet

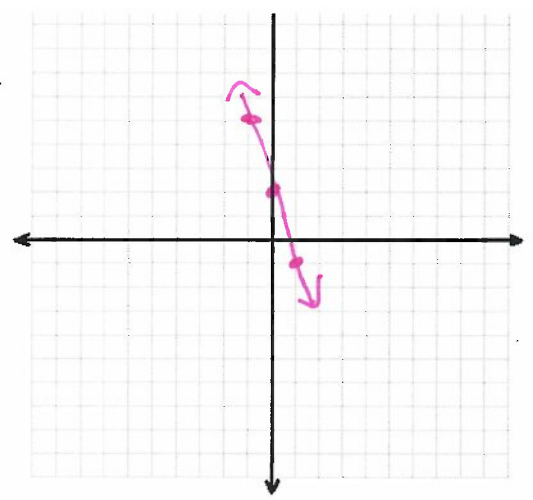
Card #	Work/Answer	Card #	Work/Answer
2	$\frac{6-2}{0+1} = \frac{4}{1} = 4$	11	on graph
16	$\begin{aligned} 2x + 8y &= 40 \\ -2x & \qquad \qquad -2x \\ \hline 8y &= -2x + 40 \\ \frac{8y}{8} &= \frac{-2x + 40}{8} \\ y &= -\frac{1}{4}x + 5 \end{aligned}$	5	$\begin{array}{l} \text{x-int} \\ 9x = 84 \\ \frac{9x}{9} = \frac{84}{9} \\ x = 9\frac{1}{3} \end{array} \qquad \begin{array}{l} \text{y-int} \\ 8y = 84 \\ \frac{8y}{8} = \frac{84}{8} \\ y = 10\frac{1}{2} \end{array}$
8	$y + 3 = \frac{2}{3}(x - 0)$	3	on graph
6	$\begin{aligned} m &= -\frac{1}{3} \quad (7, -2) \\ y + 2 &= -\frac{1}{3}(x - 7) \\ y + 2 &= -\frac{1}{3}x + \frac{7}{3} \\ -2 & \qquad \qquad -2 \\ \hline y &= -\frac{1}{3}x + \frac{1}{3} \end{aligned}$	1	$\begin{aligned} \frac{1-3}{5-7} &= \frac{-2}{-2} = 1 \\ y - 3 &= 1(x - 7) \\ y - 3 &= x - 7 \\ y + 3 & \qquad \qquad +3 \\ \hline y &= x - 4 \end{aligned}$
18	$\frac{7-3}{\frac{5}{3}-\frac{1}{3}} = \frac{4}{\frac{4}{3}} \quad 4 \div \frac{4}{3} = 4 \cdot \frac{3}{4}$ $m = 3$	7	$\begin{array}{l} \text{x-int} \\ -2x = -20 \\ \frac{-2x}{-2} = \frac{-20}{-2} \\ x = 10 \end{array} \qquad \begin{array}{l} \text{y-int} \\ \frac{6y}{6} = \frac{-20}{6} \\ y = -3\frac{1}{3} \end{array}$
17	a) $.75x + 1.25y = 150$ b) on graph c) 200 cookies, 0 cake 0 cookies, 120 cakes 100 cookies, 60 cakes	4	$y + 6 = -2(x - 3)$

Card #	Work/Answer
15	$m = \frac{1}{2} \quad (2, 7)$ $y - 7 = \frac{1}{2}(x - 2)$ $y - 7 = \frac{1}{2}x - 1$ $\quad \quad \quad +7 \quad \quad \quad +7$ $y = \frac{1}{2}x + 6$
9	$\frac{8-5}{-2-1} = \frac{3}{-3} = -1$ $y - 5 = -1(x - 1)$ $y - 5 = -1x + 1$ $\quad \quad \quad +5 \quad \quad \quad +5$ $y = -1x + 6$
12	$x = 2$
14	$y = 6$
10	on graph
13	$10x = 4y - 6$ $\quad \quad \quad +6 \quad \quad \quad +6$ $\frac{4y}{4} = \frac{10x + 6}{4}$ $y = \frac{5}{2}x + \frac{3}{2}$

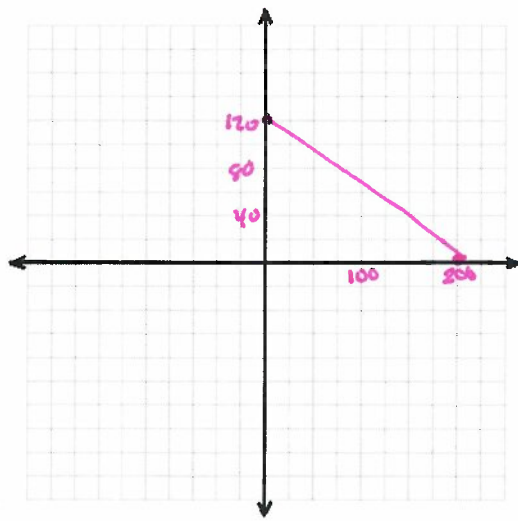
# 11



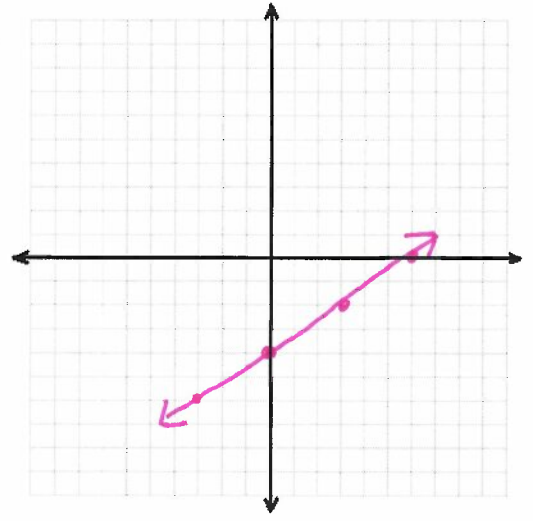
# 3



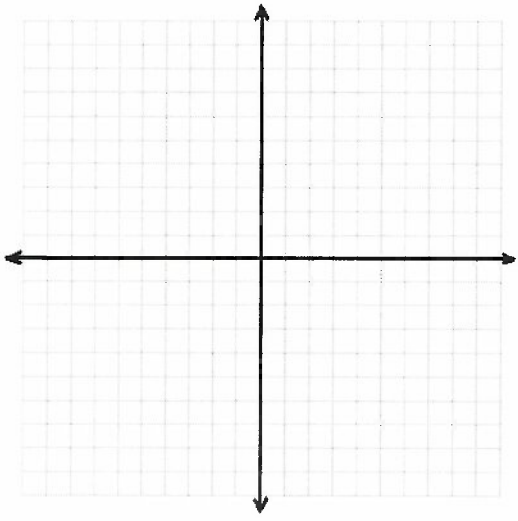
# 17



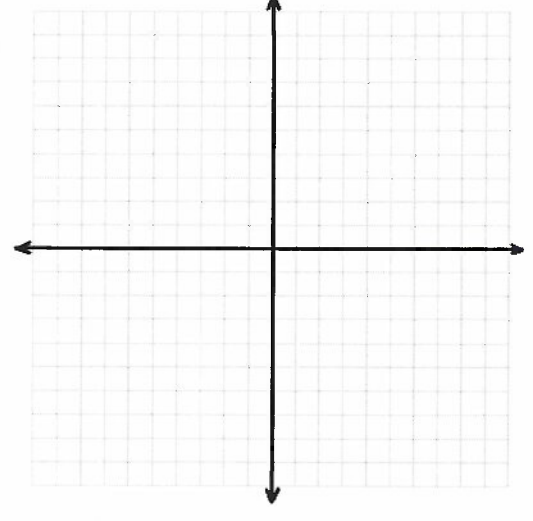
# 10



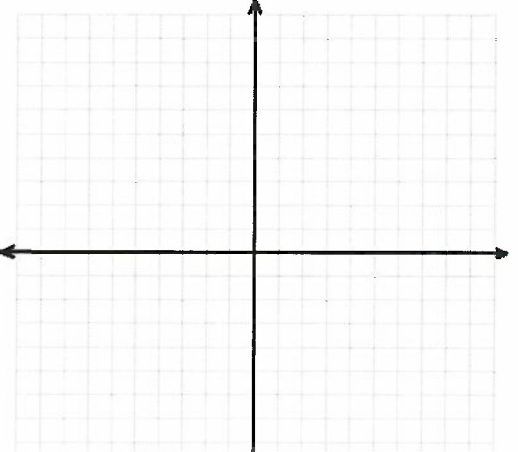
# \_\_\_\_\_



# \_\_\_\_\_



# \_\_\_\_\_



# \_\_\_\_\_

